

STEM Disability Committee - Spring Conference

Institutional Support for Students with Disabilities

Imperial College London

Denis Wright
Dean of Students, Learning and Teaching
Imperial College London

STEM-MB University

Faculty of Natural Sciences

Four departments

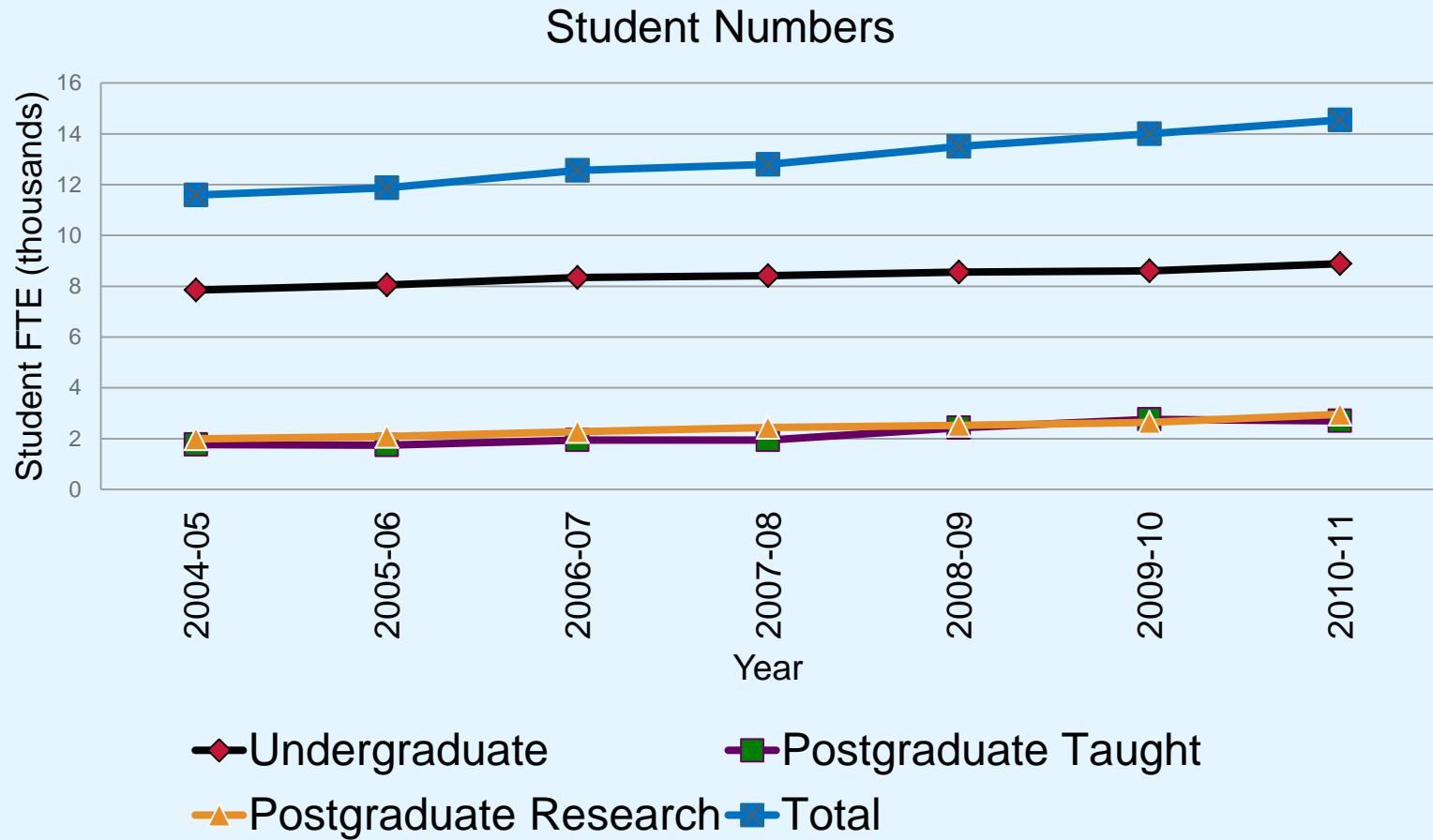
Faculty of Engineering

Nine departments

Faculty of Medicine

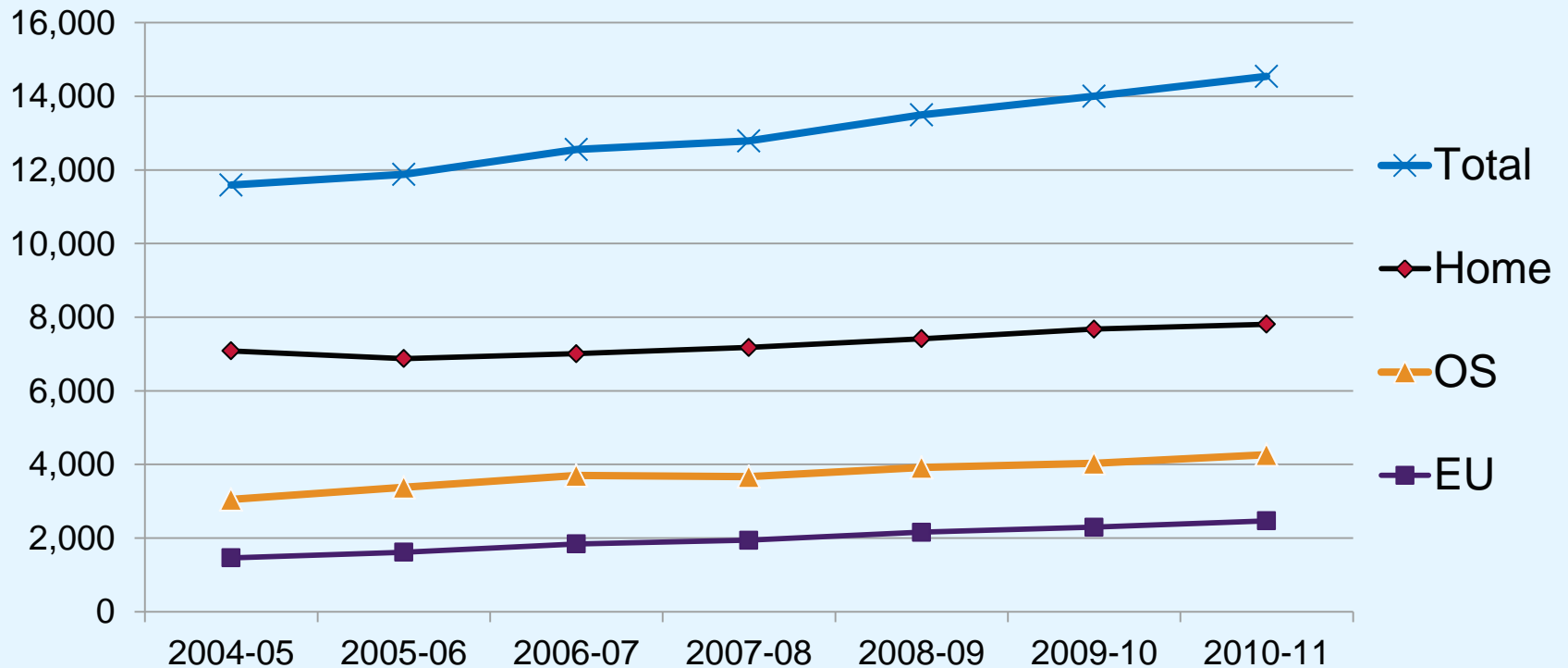
Business School

Imperial student profile: 36% PG



Imperial student profile: 29% OS, 17% EU

Student numbers by fee status



2010-2014 College Strategy

Pastoral care and welfare

Integrate further the different components of student welfare provision to allow students to access them more easily

Expand counselling, disabilities and health services

Disability Support at Imperial

Up to 2006/2007

- Student welfare directly under Pro Rector (Education)
- Disability Advisor (1.0fte)
- Low declaration rate (c. 2%)

Since 2007/2008

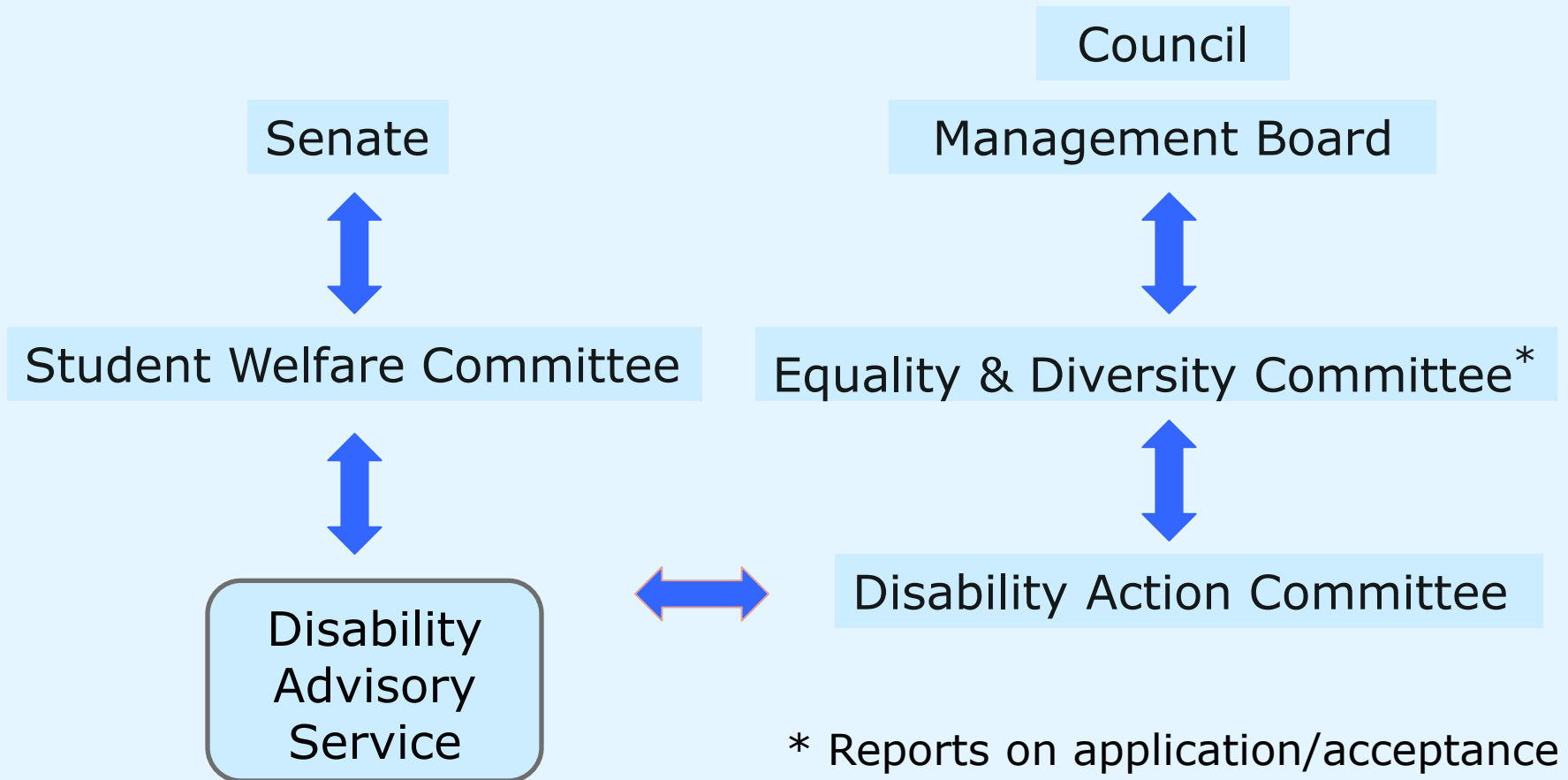
- Dean of Students, from October 2007 (reports to Pro Rector)
- Disability Advisory Service increased and broadened*
- Active promotion of Service / declarations (6.3% Oct 2013)
- Greater liaison between academic and support departments
- Increased advice and support for DSA applications
- Greater support for students ineligible for DSA

*Still below recommended baseline for number of students

Dean of Students

- Dean of Students reports to the Pro Rector (Education): overall responsibility for student welfare
- Line management: College Tutors, Hall Wardens, Student Counselling Service and Disability Advisory Service
- Main point of contact with College Health Centre; supports the work of the Chaplaincy
- Works closely with ICSU sabbatical officers, particularly Deputy President (Welfare), Deputy President (Education)

Disability Advisory Service: reporting



Student Support Services

Sherfield Building, South Kensington campus; DAS and Counselling also run weekly sessions at Hammersmith

Student Hub provides referrals to:

- Accommodation
- Admissions
- Advice Centre IC Student Union
- College Health Centre
- College Tutors
- Counselling Service
- Disability Advisory Service
- ICT
- International Office
- Graduate School
- Outreach
- Registry
- Security
- Student Financial Support Team

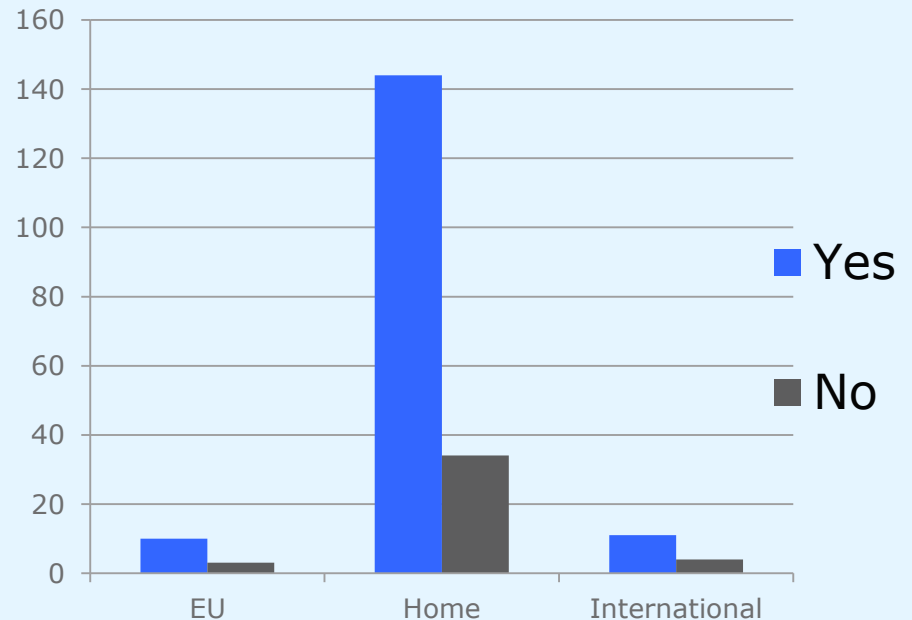
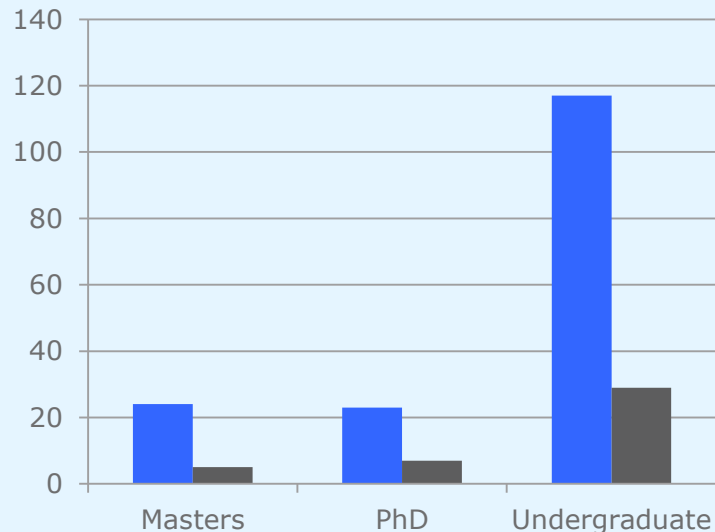


'Hub on Tour' to different campuses

'Super Hub' planned to further integrate services

ICSU Disability Survey: December 2009

25% of respondents had not declared their disability



“Was not aware it was of benefit to either party”

“Unsure how to, and not sure it will make a difference”

“Not wanting to accept the problem”

“I don't want to be stigmatised”

“Didn't think Crohn's Disease was a 'disability' until now”

Links between Departments and with College

Departmental Disability Officers (DDO): academic depts

Departmental Disability Liaison Officers (DDLLO): service depts

Disability Action Plan 2009-2010

- Meetings between DAS, DDOs, DDLLOs and Dean of Students to discuss developments in student support
- DDLLOs appointed for all service departments
- Increased support for DDOs and DDLLOs: discussion board; workshops; guidance materials
- DDOs and DAS more visible to students
- Improved webpage links
- Disclosure policy promoted in academic departments
- Revised College welcome to new students

Other Surveys

Student Experience Survey (ICSU Dec 2011):

- DAS well regarded
- More work needed to de-stigmatise declaring a disability among all sectors of the student body (increase declaration rate)
- Eliminate residual confusion among students in some academic departments over who the DDO is
- Enhance Personal Tutor and DDO training
- Extend consulting hours for DAS, Counselling and Health Centre

ISBSB Imperial Disability Support: satisfaction

2009	82%
2010	85%
2012	97% [3 rd London; 5 th RG; 11 th UK]

Support for SpLD

- Dyslexia Tutor/Assessor, March 2011
- DAS Assistive Technology (AT) Suite opened, March 2012
- Steering Group to implement action plan to enhance AT at all campuses; reports to Disability Action Committee
- 2010/2011: students disclosing a disability = 908 (5.8%)
 - SpLD = 56% of disclosures:
 - Students disclosing a SpLD (College cohort %)
 - 63% Male (63%)
 - 78% Home (54%)
 - 11% EU (17%)
 - 11% OS (29%)
- Dyslexia Tutor/Assessor (International students), June 2012

Support for Mental Health

College Tutors

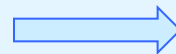
Counselling Service

Disability Advisory Service

- Advisors
- Study Mentor

College Health Centre

- Doctors
- Psychiatrist
- Psychotherapy, CBT, Counsellor



- Refer to external services
- crisis team
 - emergency assessment team
 - eating disorders unit
 - long-term psychotherapy

Academic departments

- DDO – refer to DAS, Counselling, Health Centre

Mental health....

DAS Study Mentor

Appointed October 2011

Support for mental health issues, Asperger's and ADHD

- Provides practical, one-to-one study skills support
- Facilitate the student in addressing the obstacles to study presented by enduring mental health conditions and disabilities

Students are referred to the mentoring service only after they have received a medical diagnosis and a needs assessment

Awareness, access, assessment, training...

- New DAS website: increased advice and support
- Dyslexia awareness week
- Annual College Welfare Seminar
- Admissions: reasonable adjustments to meet competency standards
- Awareness and training events on AT
- Deaf awareness/sign language interpreting
- Work with facilities management to improve access; audit by Disabled Go
- Mobile apps: campus maps, PC availability, local transport...
- Outreach centre to enable DSA study needs assessments on campus
- Personal Tutor training
- Training sessions for library staff on supporting students with SpLD

Disability Advisory Service (DAS) developments

DAS current

Three Advisors (1.9 fte)
Two SpLD Tutors (1.8 fte)
Study Mentor (0.46 fte)
Two Administrators (1.5 fte)

DAS planned (2013 / 2014)

Four Advisors (2.9 fte)* – extended opening hours
Two SpLD tutors (1.8 fte)
Study Mentor (0.62 fte)*
Asperger's Coordinator (0.5 fte)*
Three Administrators (2.0 fte)*

Good practice for students with disabilities



Institute of Physics guide:

'Disability Good Practice in University Physics Departments'

Is good practice for all students

Thank you